

Update on Rio Grande Water Conservation District Activities and Subdistricts

February 12, 2015

Presented By Steve Vandiver

General Manager

Rio Grande Water Conservation District



Shortage Vs. Adapting to Changing Conditions

- Living within our means

Effect of Drought On Rio Grande Water Supply

2000-2013 Annual Flow of Rio Grande Compared to Historical Averages

Year	Flow of Rio Grande Flow at Del Norte Gage	Deviation from 1890-1999 Average of 656,831	Deviation from 1950-1999 Average of 607,158
2000	391,200	-265,631	-215,958
2001	725,400	68,569	118,242
2002	156,400	-500,431	-450,758
2003	319,100	-337,731	-288,058
2004	527,625	-129,206	-79,533
2005	793,063	136,232	185,905
2006	570,400	-86,431	-36,758
2007	709,979	53,148	102,821
2008	710,073	53,242	102,915
2009	593,074	-63,757	-14,084
2010	539,365	-117,466	-67,793
2011	502,710	-154,121	-104,448
2012	406,949	-249,882	-200,209
2013	460,000	-196,831	-147,158

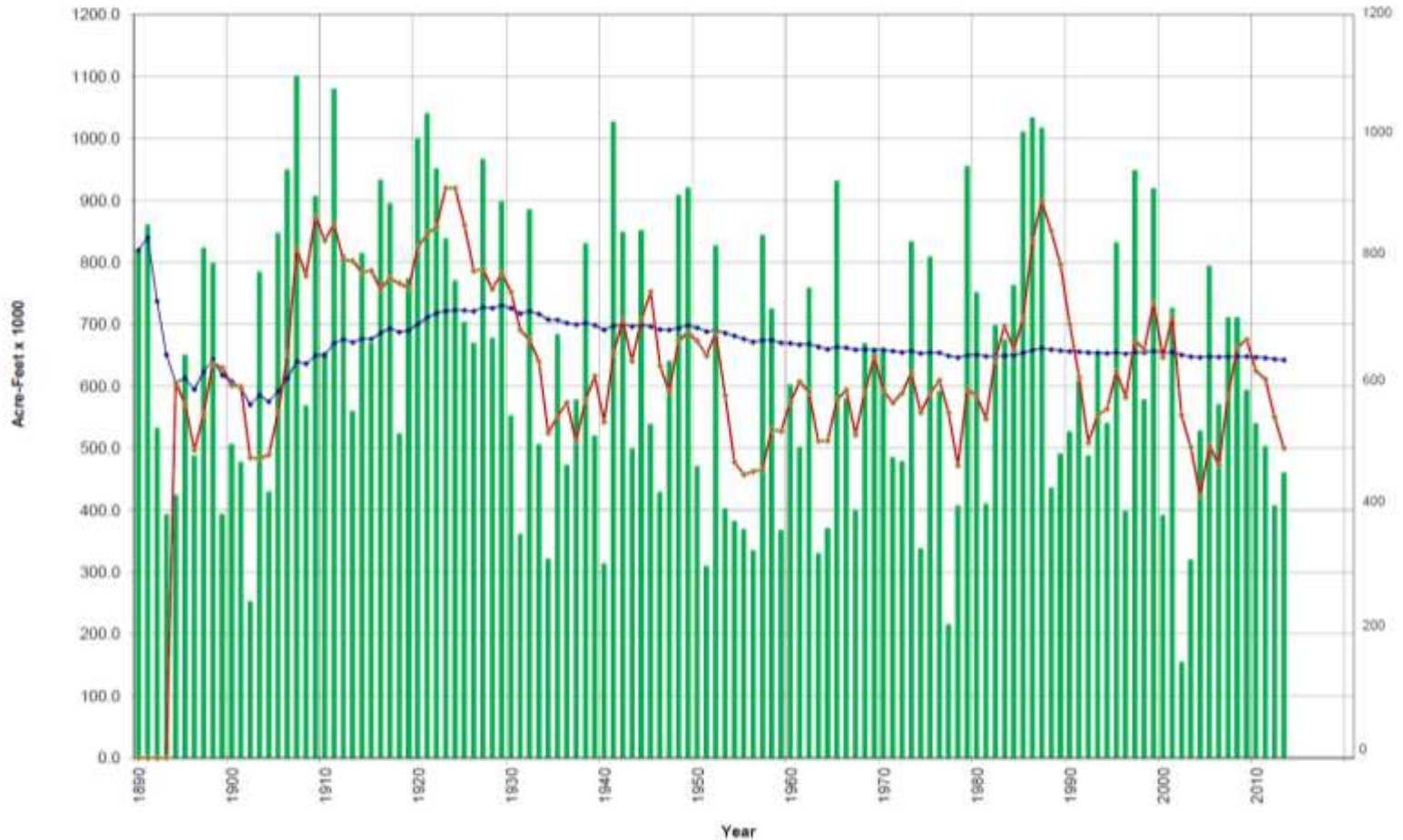
Cumulative Shortage: -1,790,295 -1,094,873

Above Ave.

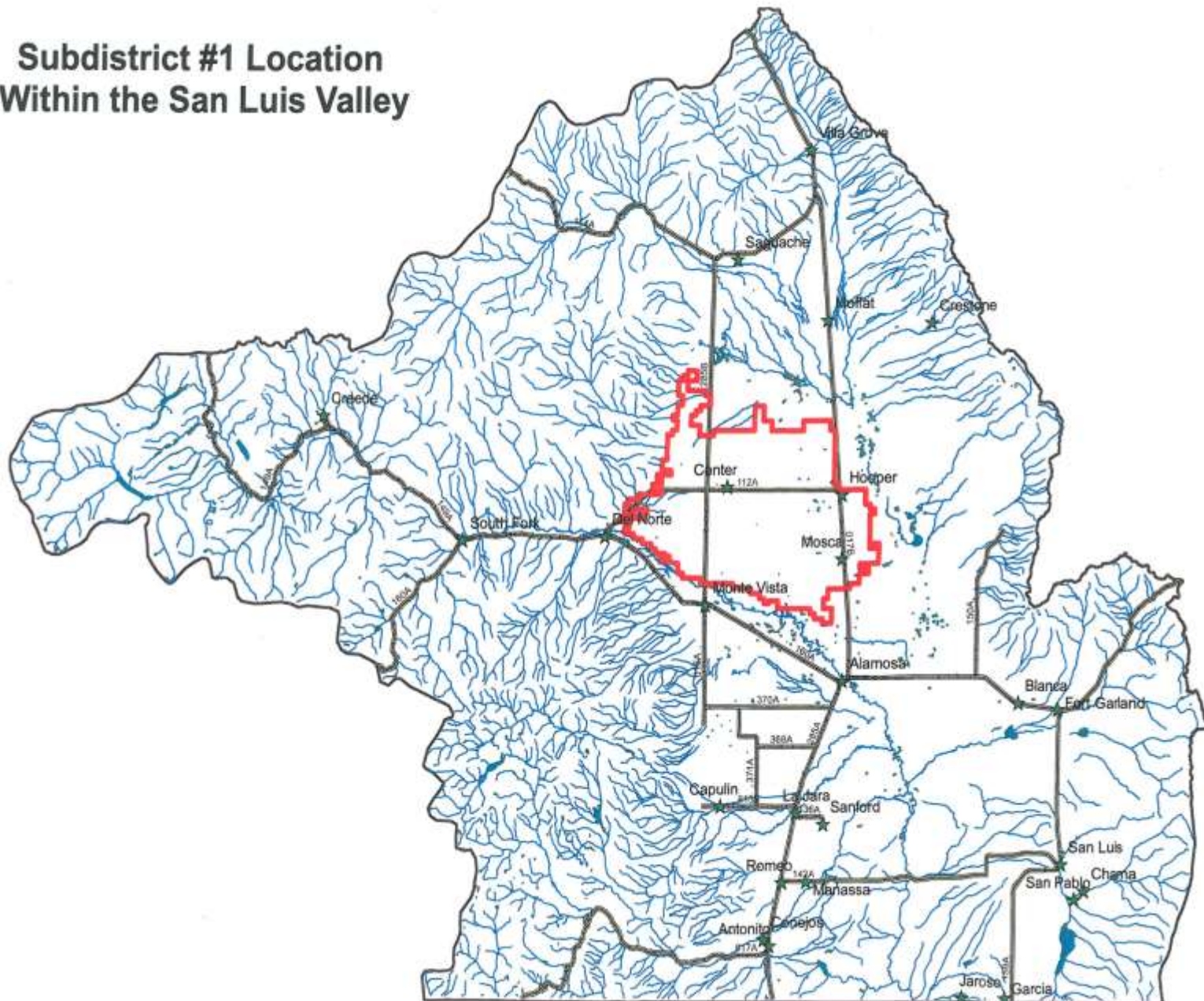
Annual Calendar Year Flows

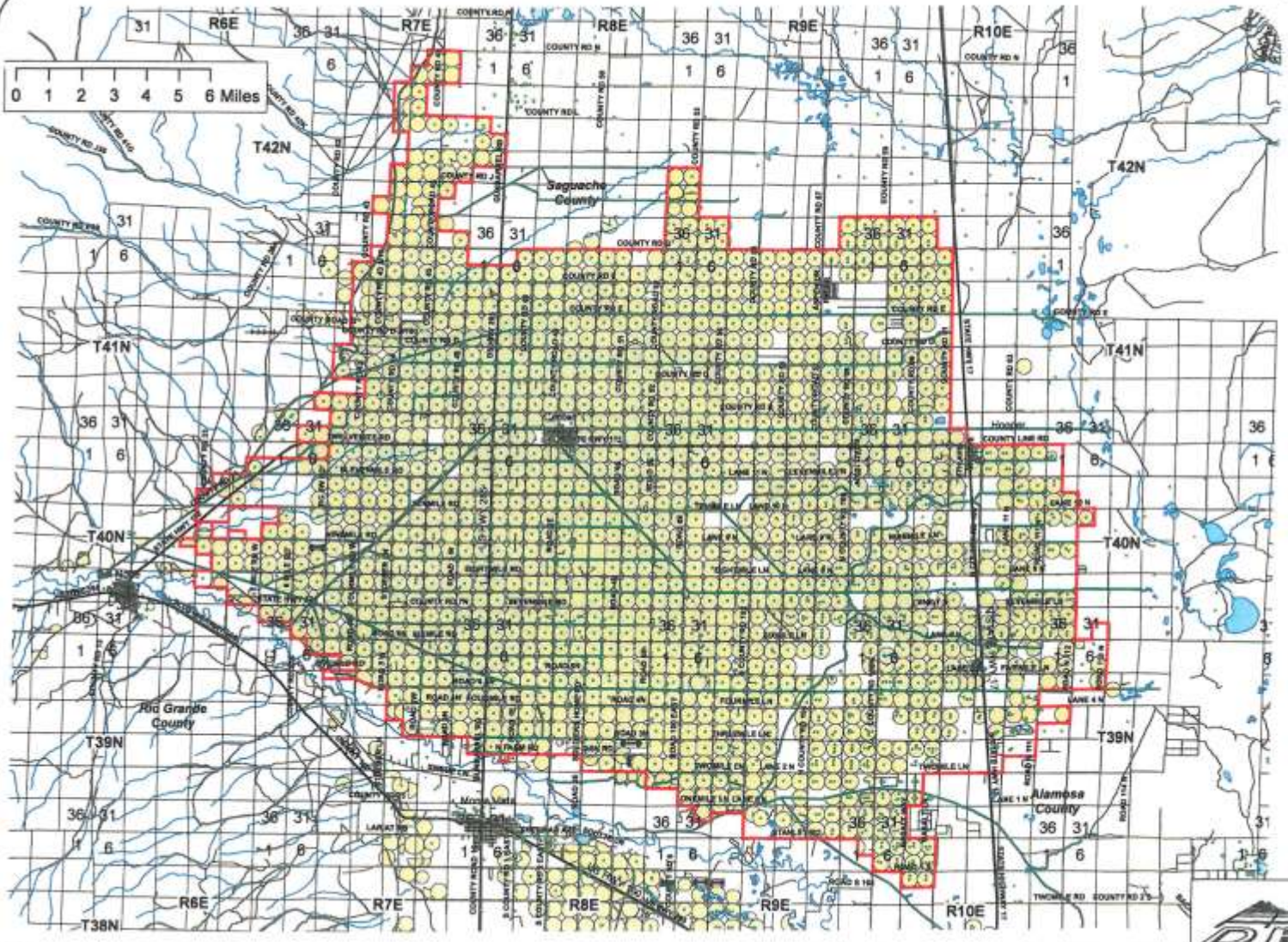
Rio Grande River near Del Norte, CO
Annual Calendar Year Flows

AF x 1000 Running Avg. 5 Year Running Average



Subdistrict #1 Location Within the San Luis Valley





**SPECIAL
SUBDISTRICT NO. 1
Closed Basin Subdistrict**



Legend

- Div3_Wells_Structure
- ▭ Subdistrict_1
- Roads
- Div3_SLV Canals
- ↔ Sprinklers_2010_linear
- Sprinklers_2010

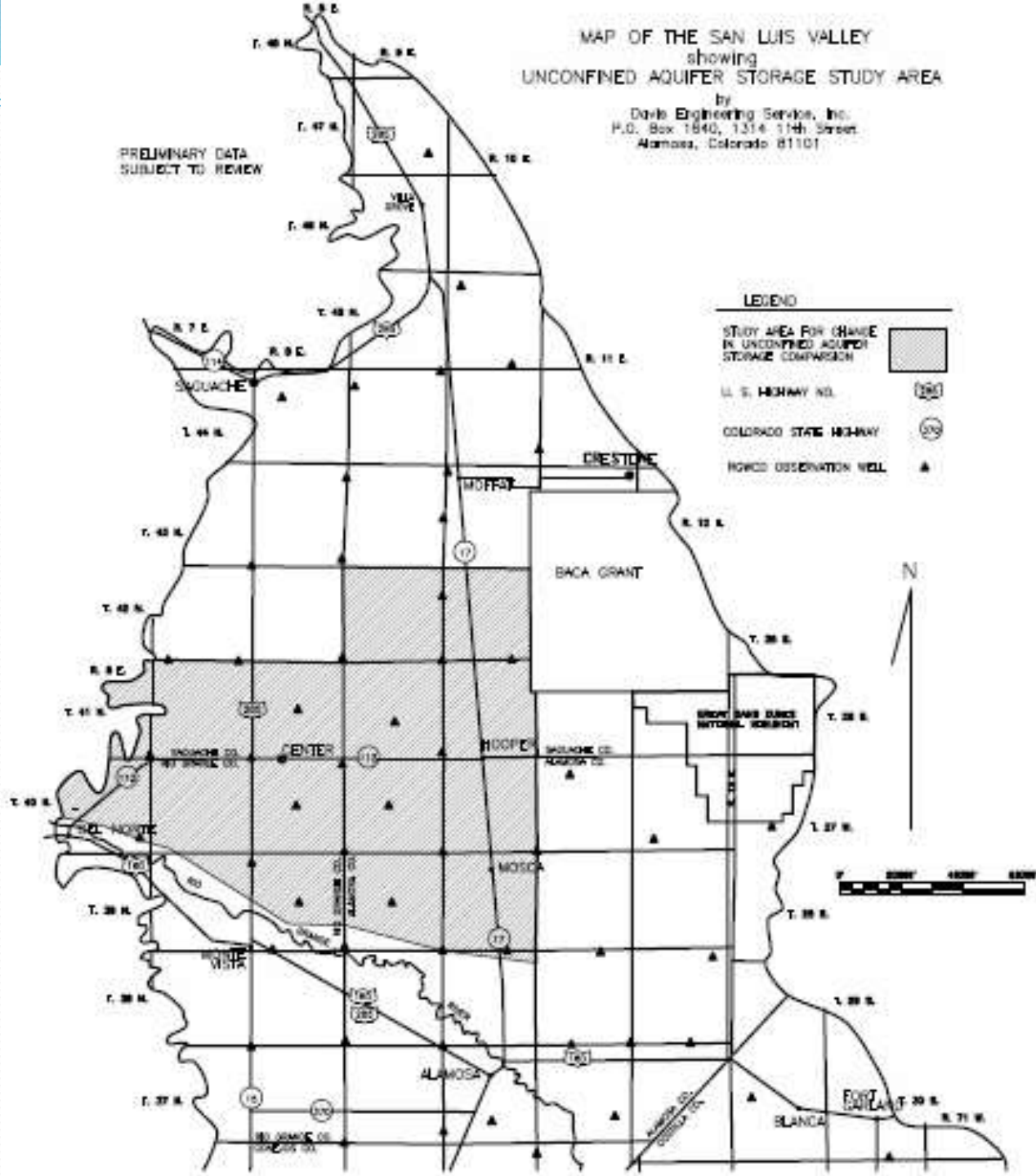
Prepared 08/09/2012

SINCE 1948 Davis Engineering Service, Inc.
1514 11th Street
P.O. Box 1840
Alamosa, CO 81101
(719)589-1004

MAP OF THE SAN LUIS VALLEY
 showing
 UNCONFINED AQUIFER STORAGE STUDY AREA

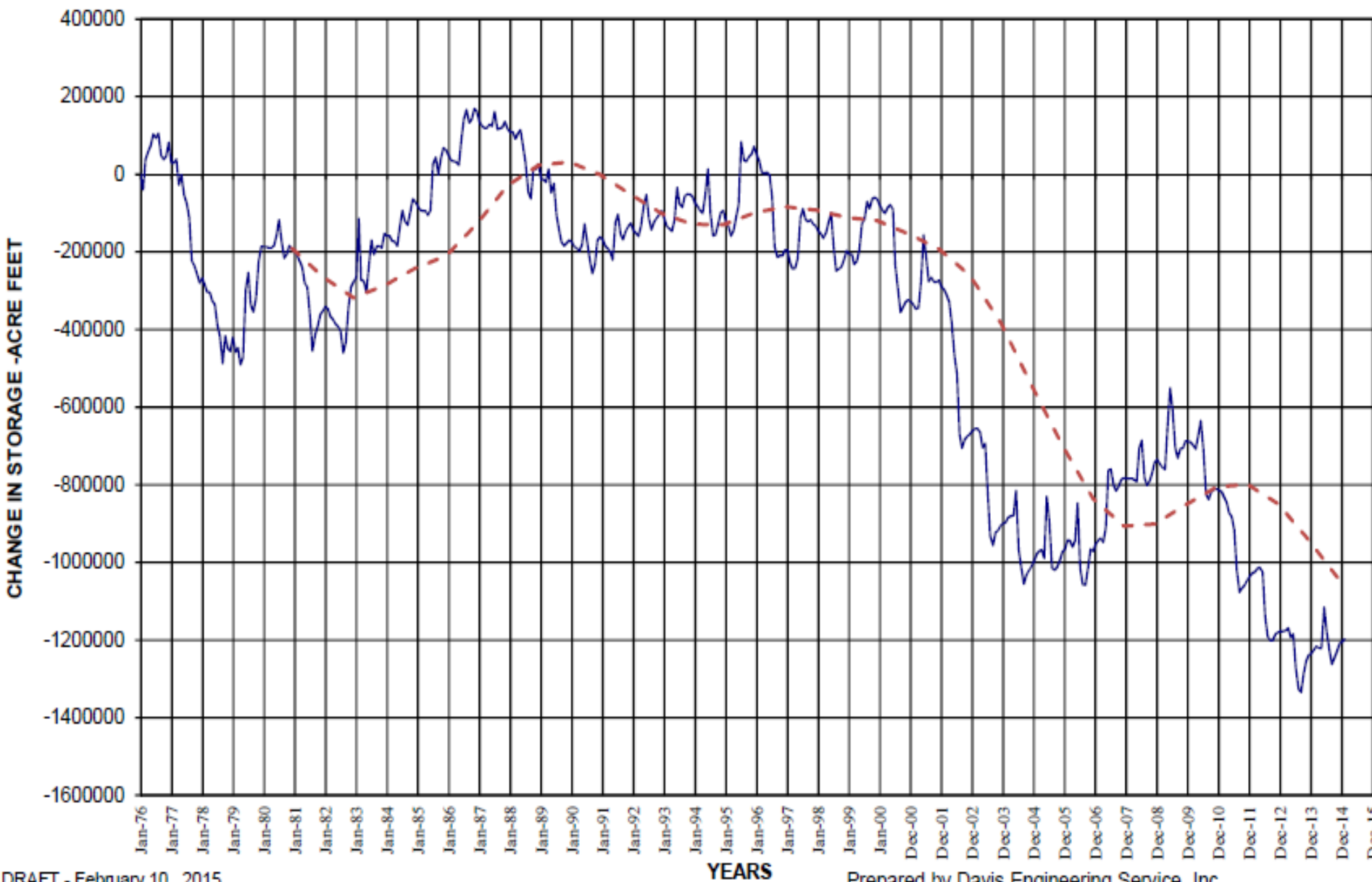
by
 Davis Engineering Service, Inc.
 P.O. Box 1840, 1314 14th Street
 Alamosa, Colorado 81101

PRELIMINARY DATA
 SUBJECT TO REVIEW



CHANGE IN UNCONFINED AQUIFER STORAGE WEST CENTRAL SAN LUIS VALLEY

— Monthly Change - - - 5 yr. running avg.

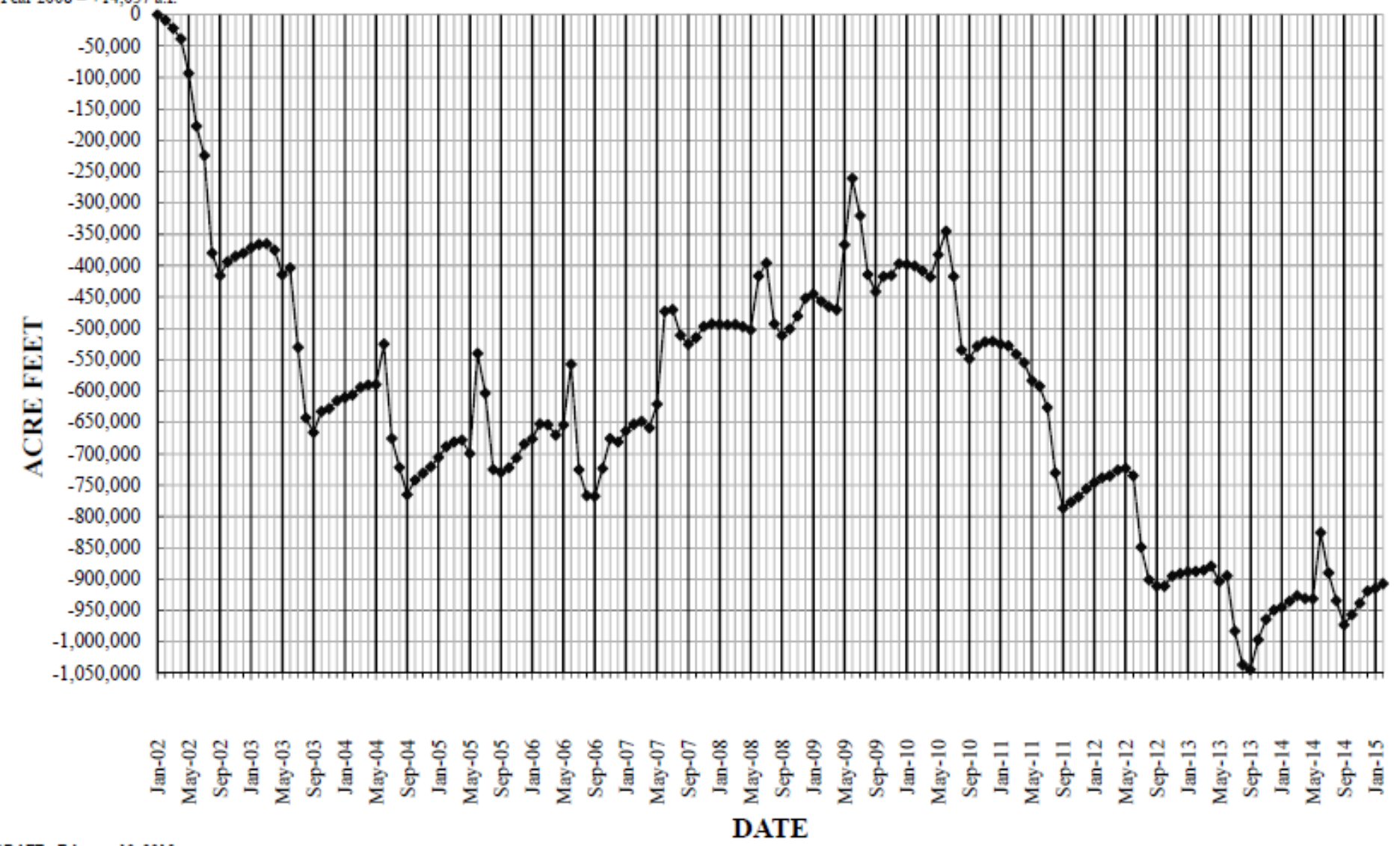


Changes: Comparing
 September of each year
 Year 2002 = -439,816 a.f.
 Year 2003 = -250,214 a.f.
 Year 2004 = -99,285 a.f.
 Year 2005 = +35,612 a.f.
 Year 2006 = -38,228 a.f.
 Year 2007 = +242,380 a.f.
 Year 2008 = +14,057 a.f.

CHANGE IN UNCONFINED AQUIFER STORAGE

YEAR 2002 - 2015

Changes: Comparing
 September of each year
 Year 2009 = +69,864 a.f.
 Year 2010 = -106,745 a.f.
 Year 2011 = -238,480 a.f.
 Year 2012 = -123,126 a.f.
 Year 2013 = -133,066 a.f.
 Year 2014 = +71,440 a.f.



Subdistrict #1 Conservation Programs

